

Jumping in at the deep end: A Continuing Professional Development pilot programme

Holly Ferris

Aneeka Shezad



UNIVERSITY OF
BIRMINGHAM

125
years

We celebrate
We activate
birmingham.ac.uk



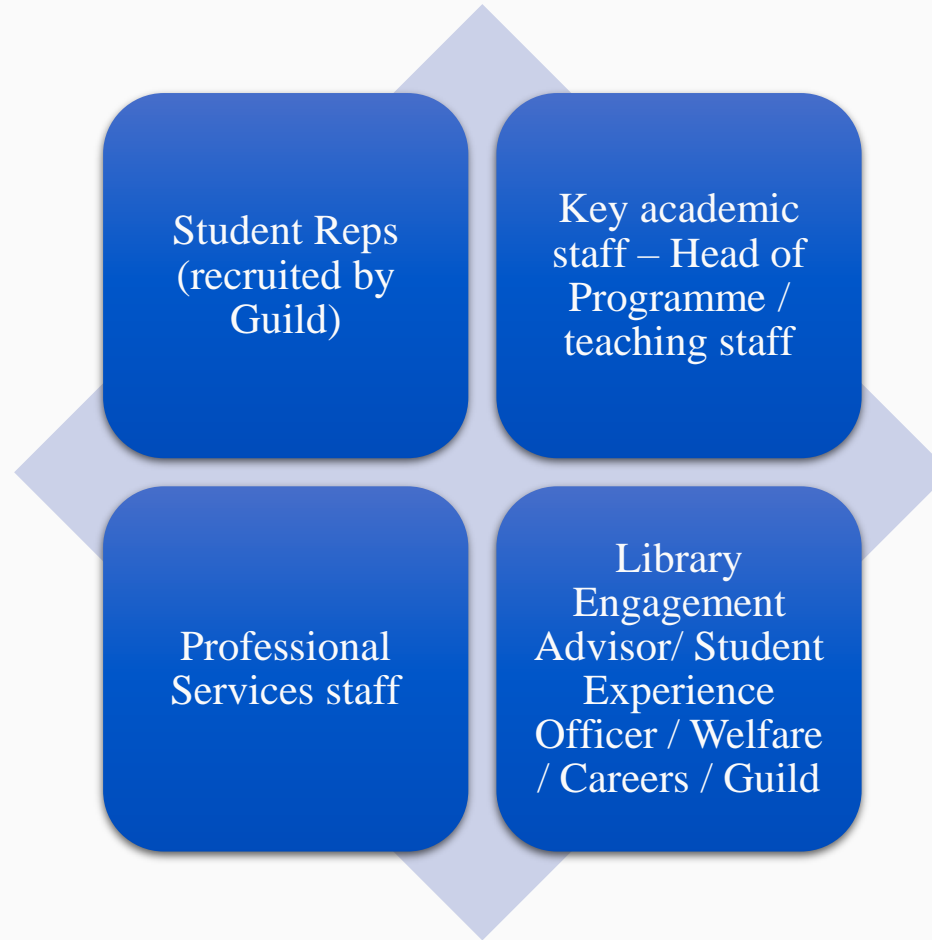
Staff Student Fora Support CPD pilot

The Engagement Team will provide:

- Training, shadowing, a dedicated Teams channel
- Before and after support from Engagement Advisor
- Feedback sessions
- Evaluation and adjustment



What are Staff Student Fora?



Before, during, and after a meeting

Before

Check with
manager

Volunteer/sign
up

Prepare

During

Listen

Take notes

Contribute

After

Summarise

Clarify

Flag for action



You can never know what to expect going into these meetings, no matter how prepared...



There could be pizza waiting for you in this meeting



We may not always be able to answer the questions attendees ask, especially if they want immediate answers

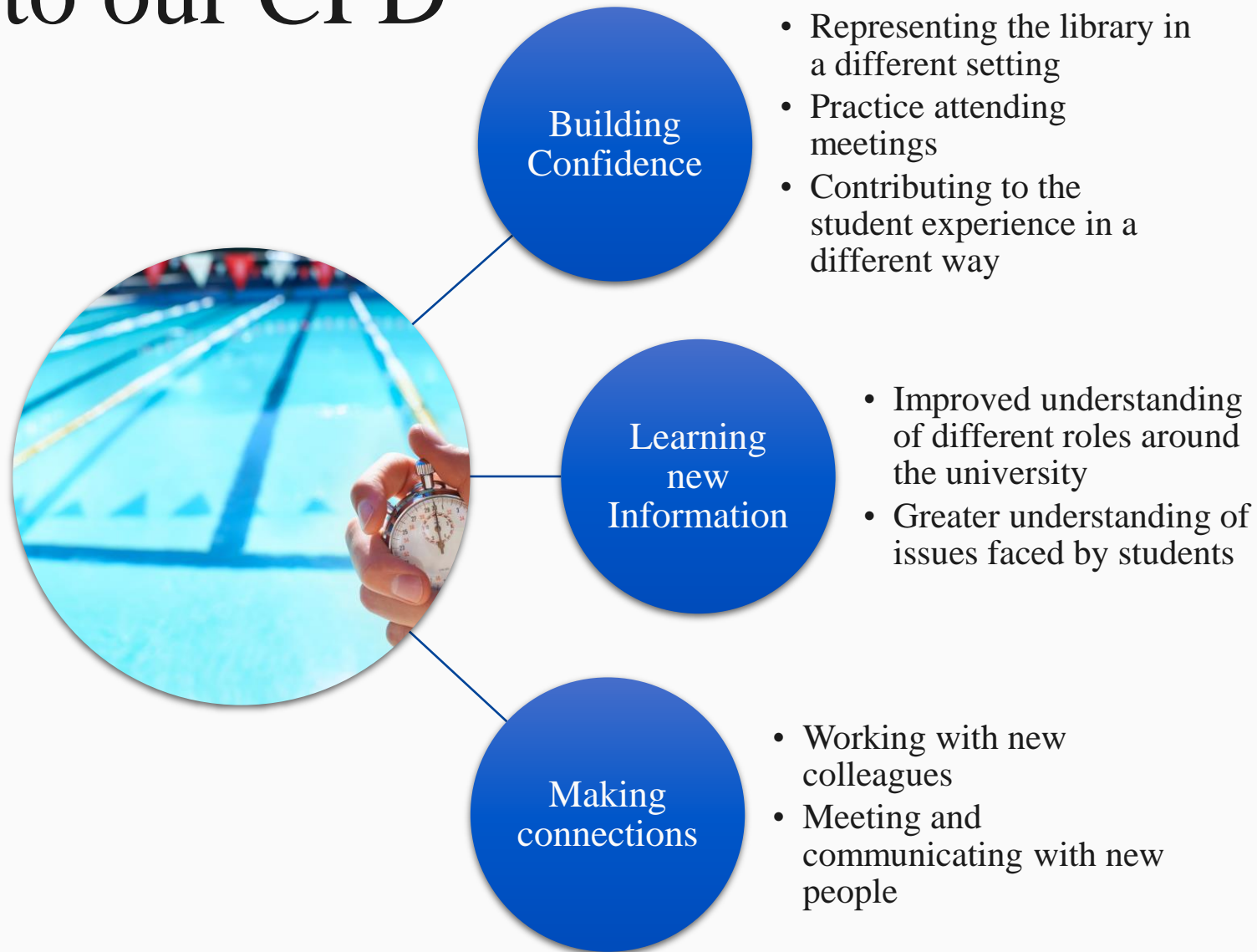


Sometimes we may be required to step out the room



UNIVERSITY OF
BIRMINGHAM

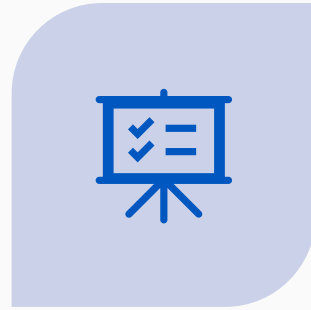
Benefits to our CPD



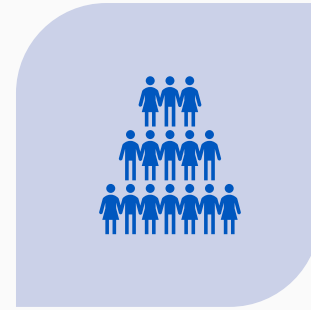
Benefits to the library



1. ENGAGEMENT TEAM
ATTENDS SSF TO
COMMUNICATE SERVICES AND
GATHER INFORMATION



2. LCS TEAM MADE AWARE OF
RELEVANT INFORMATION E.G.
TRENDS IN ASSESSMENTS



3. ALL TEAMS BETTER
PREPARED TO SUPPORT
STUDENTS AND DEVELOP NEW
SERVICES



4. IMPROVED EXPERIENCE FOR
STUDENT AND CLOSER
RELATIONSHIP WITH
DEPARTMENT



Lauren

"The opportunity to attend SSFs is a rare and exciting one. It allows me to represent Library Services within different schools and departments and learn more about how the student cycle works. I have found it to be challenging and nerve-racking, but also incredibly interesting and fulfilling. It's a great way to broaden your CV, work with new people, and develop skills outside of your usual role, I would really recommend it to everyone."



UNIVERSITY OF
BIRMINGHAM

Olivia



"I have never been a very confident speaker, whether it be within a larger groups or small meetings - so when the chance to converse with different types of staff and students was offered, I jumped at the chance, as I knew I had to get over this fear of public speaking. I have been fortunate to attend truly interesting meetings and speak to kind and patient staff and students. If this opportunity comes around again, I recommend it highly."



Ellie

“By being part of the SSF pilot I have been given the opportunity to understand the relationship between the Libraries and Learning Resources team and the other departments/schools & collages across the University. I have also been able to witness how students and different courses engage and use the library and the services that are on offer.

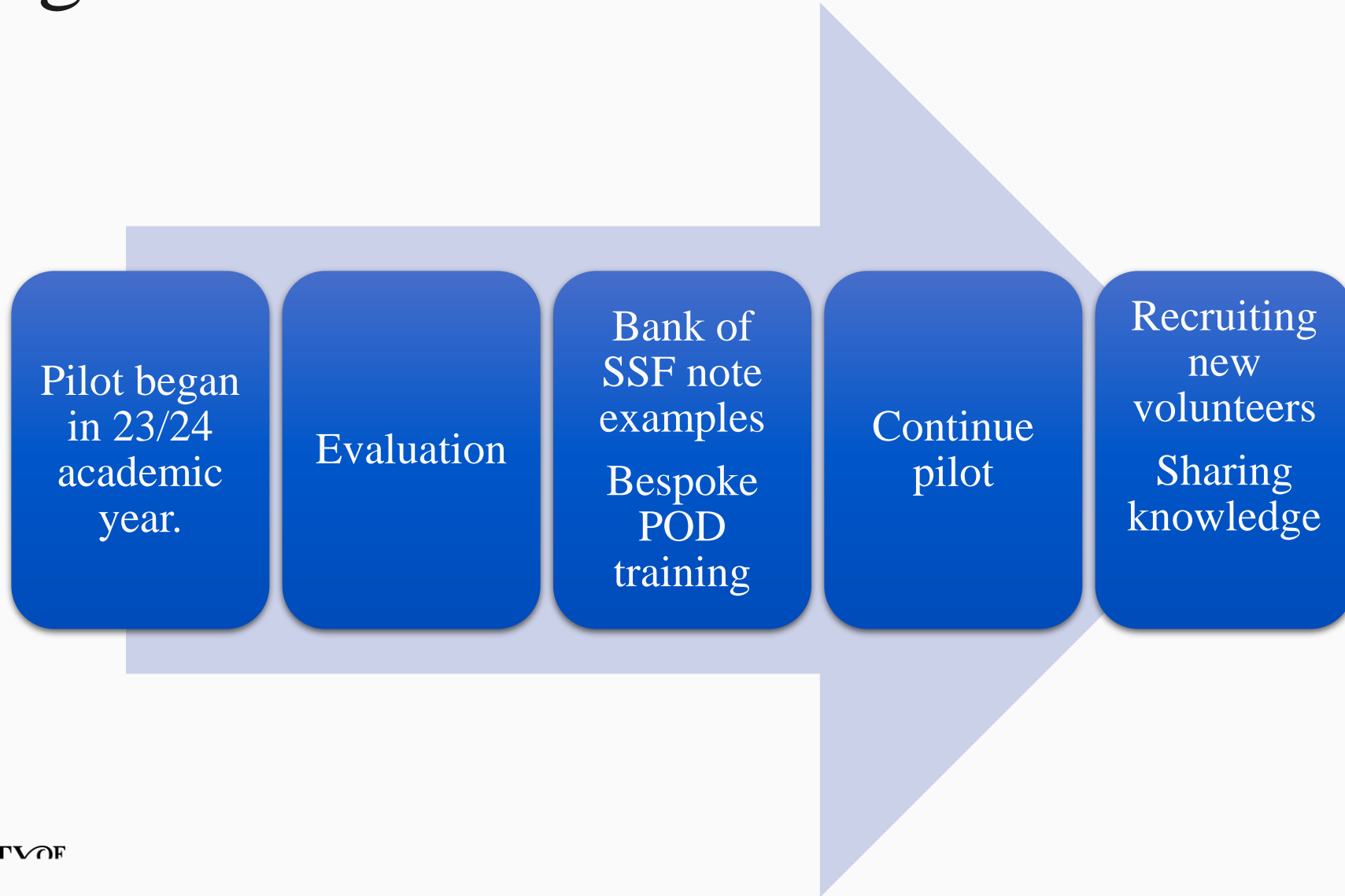
This pilot project has contributed massively to my professional development as it has allowed me to communicate with a wide range of audiences, practice my presentational skills and has given me the opportunity to be a representative for the Libraries and Learning Resource team.”



UNIVERSITY OF
BIRMINGHAM



Checking in and what comes next?





Could you create a similar pilot within your own team?



UNIVERSITY OF
BIRMINGHAM

Thank you!

Any questions?



UNIVERSITY OF
BIRMINGHAM

