



University of
Sheffield | The University
Library

Opening Up Library Spaces:

Interactive Maps for Enhanced Wayfinding and Neurodiversity Support

George Perkins g.perkins@sheffield.ac.uk



Did you know?

Autism

1 in 7

Dyslexia

People in the United
Kingdom are
Neurodiverse

ADHD

10 million people out of a population of 68 million

Dyspraxia

What it can feel like?



What can we do?

**Create a library experience
that allows all students to
study in a way that allows
them to thrive.**

What I am going to talk about

- **Background of how we came to create our Interactive maps**
- **How we created the maps**
- **Transferable skills staff can develop**
- **What the future has in store for us**

Background

Examples

“We have a large number of neurodiverse students in our department and they have anxieties about the labs”

“My classes are in the Diamond, but I prefer the studying in Western Bank Library because I prefer a silent space”

“I was really disappointed that I had to chat with a chatbot”

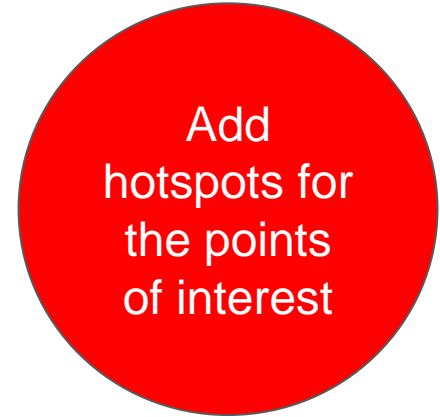
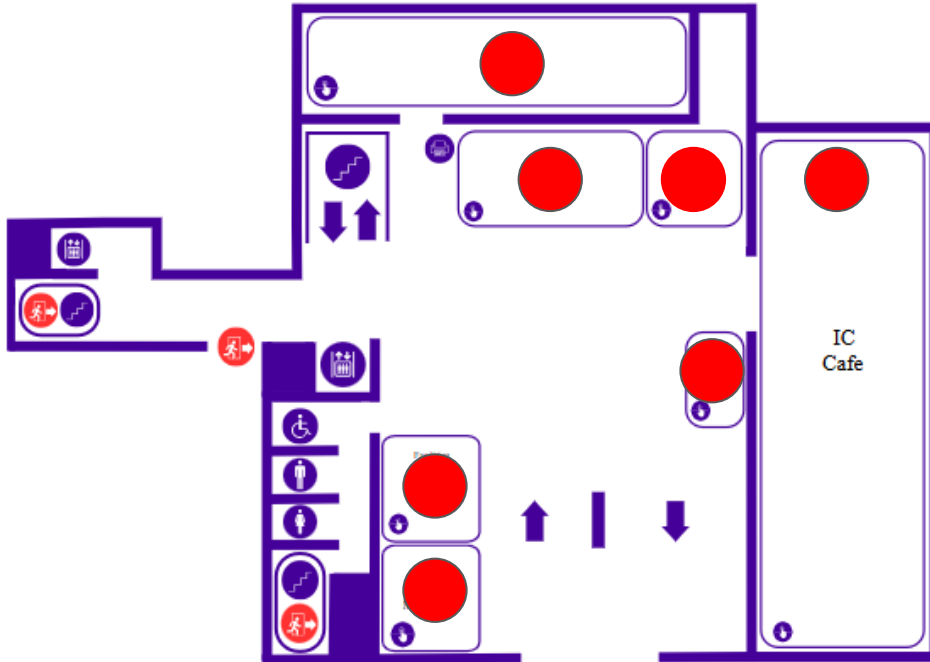
“I’ve been trying to access my Google Drive, but I can’t get intouch with staff because the help system is behind a login and my account is blocked”

We could see that users have preferences in how they like to study, interact with help and an example of anxieties students can face.

We wanted a solution that can highlight how users can interact and user spaces in away that suits them. For us this was Interactive maps

Creating the maps

Drawing maps in the SVG format - Adobe Illustrator or Canva

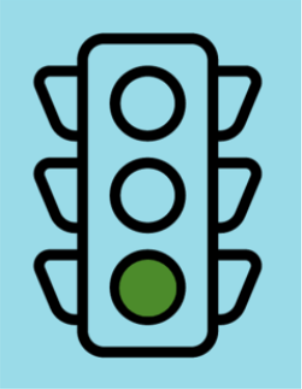


Creating the maps

General Study with PCs

General study area with a mixture of collaborative study spaces and managed PCs.
Please respect the space and be considerate of fellow library users.

Noise Level



General Study Spaces

- Talking is expected here
- individual or Group Collaboration
- Phone and computer can have volume on

Please respect the space and be considerate of fellow building users.

Close

- Add descriptions
- Images
- Links

Editing Html and
CSS
you can do this

What else can you add to maps?

Using Html embedded codes you can add

- Videos - How to guides to using services machines
- 360 Images - Explorer a space or a room with guide to what equipment does.
- Calendars - When is the next event happening in room or find out when the room is free to study in
- Audio - What noise level can you expect in the area

These feature allow the user to explorer the space and understand happens there at the point of need, but also allow the user to make a choice if the area is right for them.

Transferable skills

- Collaboration - Working with different departments within the library and University as they are stakeholders and experts on their spaces
- Technical skills - HTML, CSS, Javascript, Adobe Illustrator, WondaVR, libMaps and using AI
- UX skills - Ability adapt to project to meet the users needs rather than what we think they need.

We have a range of staff that can help to make sure the Interactive maps meets the needs of our customers with information curated by the experts.

The future....

- Continue to work with students
- See if features libMaps can enhance support
- 360 tour of library buildings

Western Bank Reading Room Demo



Thank you for your
time

Any Questions?